

Hours of Operation

Monday to Friday from
6:30 a.m. to 6:00 p.m.

Type of Care

We provide care for children from three months to twelve years of age and offer full and half day as well as full and part week schedules (minimum 2 times/week).

Staff:

We are staffed by caring, qualified Early Childhood Educators and loving Assistant Teachers who provide a wide variety of fun experiences that promote and enhance child development. Most of the staff have been with The Learning Corner for over 20 years.



A place where we minister and provide care to the whole family



The Learning Corner

The Salvation Army
3199 Lauzon Rd.
Windsor, Ontario
N8T 2Z7

Phone: (519) 944-4918
Fax: (519) 944-4051
Email: tlceastwood@cogeco.net

May 1/19

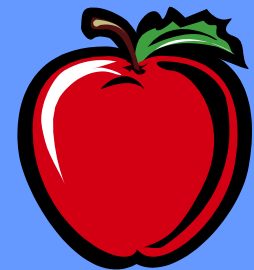
The Salvation Army
3199 Lauzon Rd.
Windsor, Ontario
N8T 2Z7

The Learning Corner

Child Care Centre

*3199 Lauzon Rd.
Windsor, Ontario
N8T 2Z7*

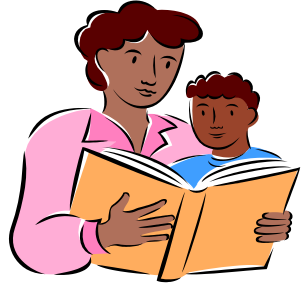
(519) 944-4918



Open Monday to Friday
6:30 a.m. – 6:00 p.m.
OPEN YEAR ROUND



The Learning Corner Child Care Centre



The Learning Corner
is a non-profit
Christian Day Care.

**Established in
1986**

We are operated by the Salvation Army ,
Licensed by the Ministry of Education and
Governed by the Childcare and Early Years
Act 2014 .

At The Learning Corner we believe that
every child has a right to a safe, warm and
loving environment in which they can grow
and develop. We feel it is our responsibility
as part of this community to provide
children with such an environment.

We recognize that every child is unique and
that we are entrusted with the children at a
time when growth is rapid. We care for the
children's physical, social, emotional, spir-
itual and intellectual development.

Basic Daily Schedules includes:



Circle Time



Creative/Sensory Activities



Free Play



Dramatic
Play



Outdoor Play



Field Trips



Church Time



Rest Time



Lunch and
Snack times



Fees: (eff. Apr. 1,2007)

There is a \$25 Registration Fee.

One months fees are required upon
registration since billing occurs at the
end of each month.

	Full Day	Half Day
Infant	\$46	N/A
Toddler	\$41	\$24
Preschool	\$36	\$23
Kindergarten	\$36	\$23/\$24*
School Age	\$36	\$23
	Before/After School	\$6.50/hr.

* during school year

** Subsidy information is available upon request

